

# Chess

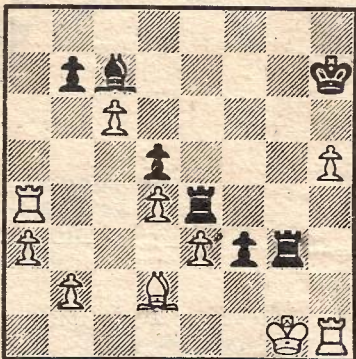
## How did he lose?

THE FOURTH GREAT international open tournament recently concluded in Las Palmas resulted in a win on tie-break for Elson of Sweden, ahead of Menvielle, Werner, and Debarnot, who also reached seven points out of nine. I finished in 12th position on six points, but managed better in five minute chess against some old kibbutzers in a local park.

Many different nationalities were represented at Las Palmas. Each year players come to sample the attractive beaches and weather as well as the carnival atmosphere prevalent throughout the event.

The strength of Las Palmas is well illustrated with the following example. The unfortunate loser finished in 40th place out of the 90 participants, but with this game produced one of the most amazing episodes in the tournament.

T. SIBBING



J. RUBIO

T. Sibbing (Holland) v J. Rubio, (Spain).  
Gran Canaria, 1977.

In this adjourned position White offered a draw, as would probably have been the result if he had sealed 1. Kf1. But Black was determined to win (three pawns down!) and refused.

- 1. Kf2 Rg2 ch
- 2. Kxf3 Rxd2
- 3. cxb7 Re7!

White still has a winning material situation with five good pawns for his bishop, but now is threatened with a mating net, e.g. 4... Rf7 ch 5. Kg4 Rg2ch 6. Kh4 Rfg7 7. h6 Bd8 ch 8. Kh5 R(7)g5 ch 9. Kh4 R(5)g4 ch 10. Kh5 Rh4 ch! 11. Rxf4 Rg5 checkmate is pretty, but not the only line. Rubio makes an escape for his king.

- 4. e4

Now Sibbing could take a draw with 4... Rf7 ch 5. Ke3 Bf4 ch but having come this far he didn't want to split the point, so after 40 minutes' thought he found a brilliant but unfortunately fatal winning attempt.

- 4. . . . Rxe4!?
- 5. Rcl Rf4 ch
- 6. Ke3 Rdf2!?

The plan envisaged on move 4. A mating net has been formed around the white king and it appears that the threat of R(4)f3 checkmate is unstoppable. But chess is sometimes unjust.

- 7. Rxc7 ch Kh6
- 8. Ra6 ch Kg5
- 9. Rg7 ch Kh4

The planned haven. Now surely it must be mate!

- 10. Rg3!! Kxg3
- 11. b8=Q

And oh dear . . . the queen (promoting to a bishop would be too sarcastic) pins the mating rook and even a perpetual is nowhere to be seen. Black gave up, disgusted, a few moves later, not quite sure why he lost!

MURRAY CHANDLER